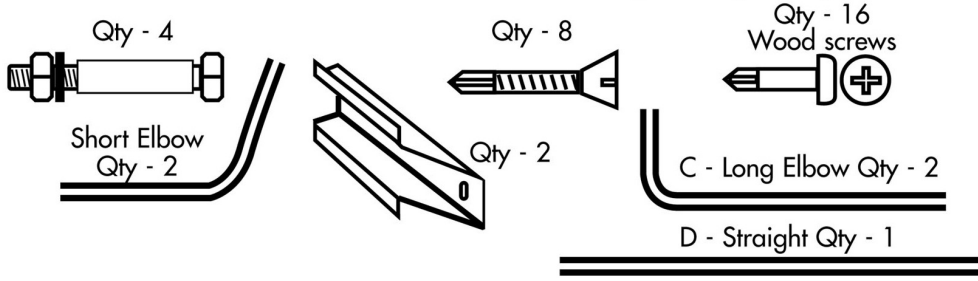


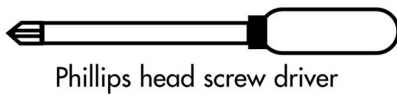
Cover Lifter Assembly Instructions



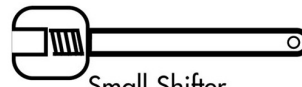
COMPONENT LIST - visual drawing and quantity



TOOLS REQUIRED



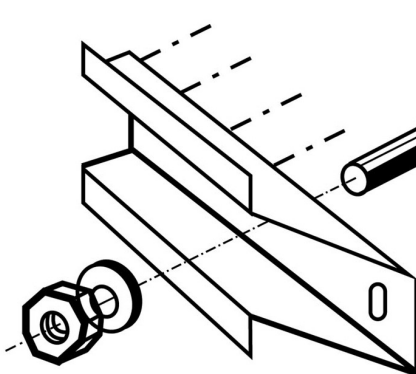
Phillips head screw driver



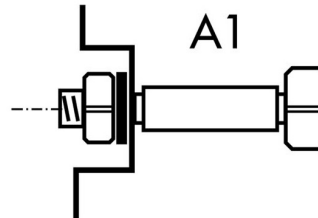
Small Shifter

STEP.1

ASSEMBLY INSTRUCTIONS



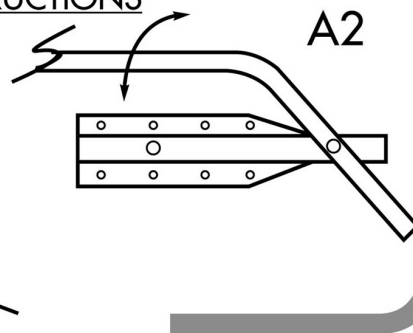
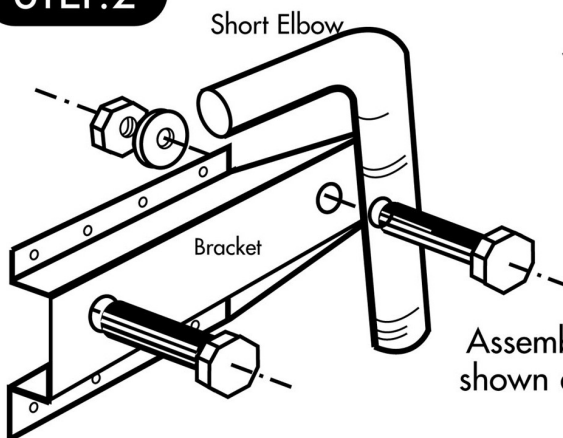
NOTE:
Ensure that the spa
cover is on at start
of installation



Fit bolt assembly to centre hole on mounting bracket.
Position as diagram A1

STEP.2

ASSEMBLY INSTRUCTIONS



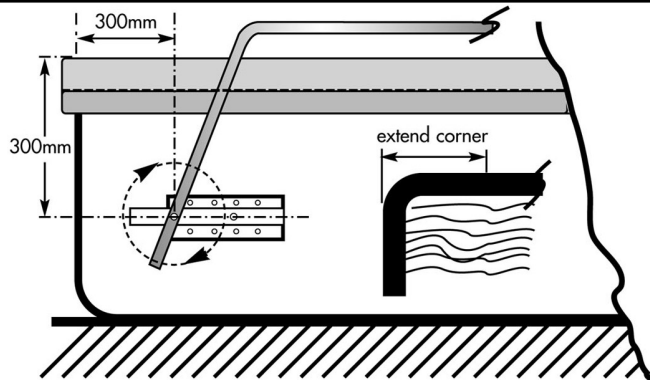
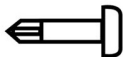
Assemble short elbow to bracket as
shown above and position as shown
in Diagram A2

Cover Lifter Assembly Instructions



STEP.3

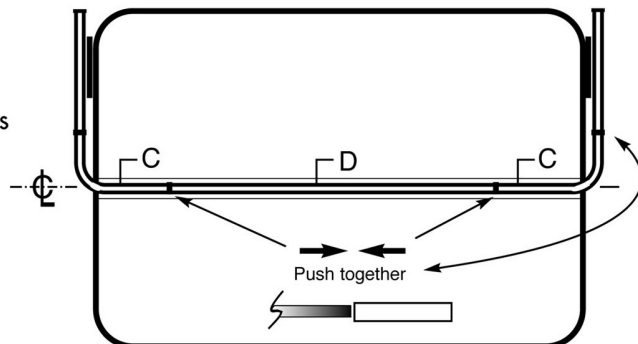
Fix bracket into position on side of spa 300mm from top of cover making sure it sits horizontal. Use the wood screws provided 8 per bracket as shown include cover and lip in calculations



STEP.4

Assemble the remaining long elbows and straight section, adjust the lifter steel tube frame to sit comfortably on the centre fold of spa cover.

Fit the self drilling Tex screws in to the tube frame to hold firmly in place.



STEP.5

To operate lift and fold spa cover in half back on its self, then repeat lift and fold action in same direction to store cover.

